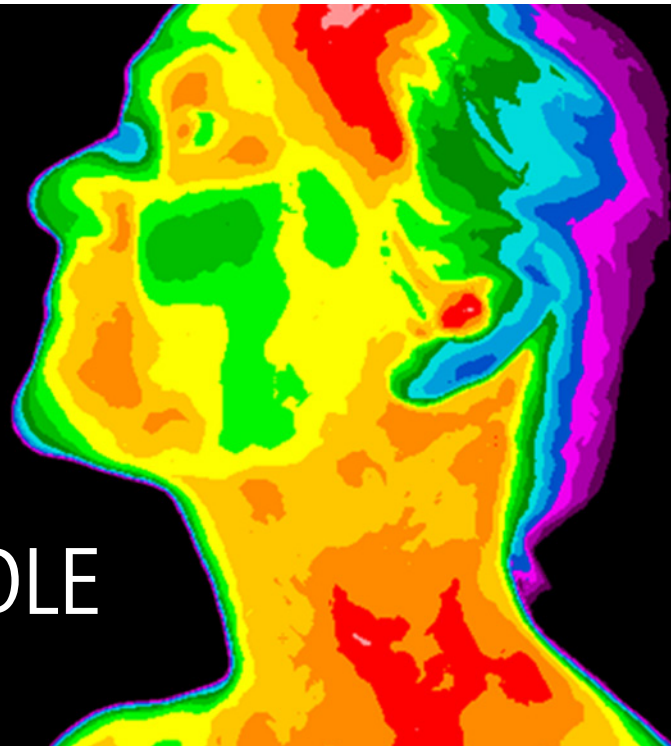


# MOBOTIX THERMAL BUNDLE

## EXPAND YOUR VIEW



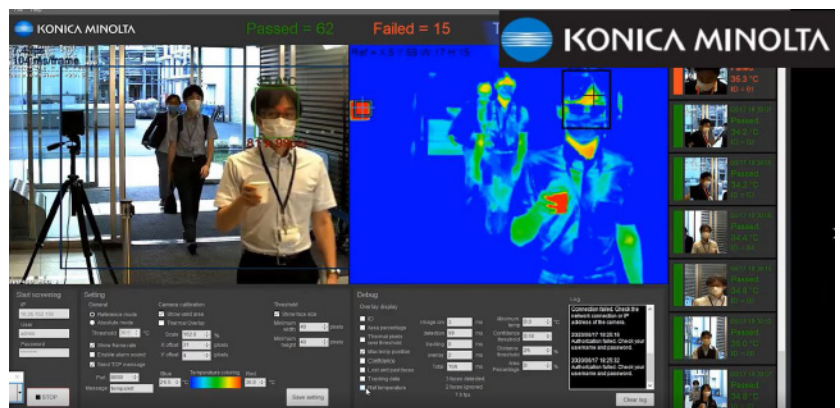
**Using MOBOTIX Thermal Cameras in your operations helps in many different ways.** Traditionally, the ability to monitor surface temperatures, as with heat-sensitive manufacturing operations, has made thermal cameras an important element to any intelligent security solution.

At Konica Minolta, we know that today many organizations are choosing to use thermal camera imagery as a first level screening for employees and visitors into a facility. When positioned closely to an individual's face, this first level provides alerts when out of a prescribed surface temperature range.

### WHAT YOU NEED TO KNOW

We have created a thermal bundle with our M16 MOBOTIX Thermal Indoor/Outdoor cameras and optional KMPF available. You can work with our professional services team to install and calibrate your cameras in your unique environment.

As with all of our MOBOTIX intelligent security solutions, these reliable, German-built video surveillance cameras give you unparalleled clarity with images in regular light, low-light and thermal views.





## WHY IS THIS EASY?

We have bundled our MOBOTIX thermal radiometry cameras with Konica Minolta's professional services and financing options so your organization can easily install the system you need.

- ✓ If being purchased for facility screenings, be sure to only install your camera indoors within a controlled environment.
- ✓ The people you are screening will need to remove their glasses, hats and masks,\* and they should look at the camera with their mouth closed.

\*Konica Minolta offers a Face Mask Detection Solution that integrates with the MOBOTIX M16 camera. Contact us for more details on this offering.

### YOUR RESPONSIBILITY

- Power over Ethernet (PoE) Switch
- DHCP-Enabled Network
- Outbound (WAN) Internet Access
- Non-contact, Medical-grade Thermometer
- Camera Installation and/or Mounting

### KONICA MINOLTA PROVIDES

- MOBOTIX M16 Thermal camera(s) including:
- 4 GB Formatted SD card (installed)
  - MOBOTIX Management Center Video Management Software (VMS) (For Customer Download)
  - Three-Year Manufacturer's Warranty
  - Shipping to Customer 3rd Party
  - Built-in Ambient Temperature Sensor
  - Built-in Two-Way Audio
  - Network Installation

### QUESTIONS?

Contact us to learn more about the features of the M16 MOBOTIX Thermal camera, and this camera bundle.



## PARTNERSHIP

Konica Minolta can help give shape to your ideas and partner with you to achieve your corporate objectives. Contact us to realize opportunities in:

### INFORMATION MANAGEMENT

Cloud Information Management  
Content Management  
Automated Workflow Solutions  
Business Process Automation  
Security and Compliance  
Mobility

### IT SERVICES

Application Services  
IT Security Assessments  
Hybrid and Private Cloud  
Managed IT Services  
Business Continuity  
24/7 Help Desk  
IT Resources and Consulting  
Technology Implementation and Deployment

### TECHNOLOGY

Office Multifunction Business Solutions  
Commercial and Production Printers  
Industrial Printers  
Wide Format Printers  
Laptops, Desktops and Computer Hardware  
Security Surveillance Systems  
Servers and Networking Equipment  
Managed Print Services (MPS)

For more information about Konica Minolta products and solutions, please visit: [www.konicaminolta.ca](http://www.konicaminolta.ca)

© 2022 KONICA MINOLTA BUSINESS SOLUTIONS (CANADA) LTD. All rights reserved. Reproduction in whole or in part without written permission is prohibited. KONICA MINOLTA and the KONICA MINOLTA logo are registered trademarks or trademarks of KONICA MINOLTA, INC. All other product and brand names are trademarks or registered trademarks of their respective companies or organizations. All features and functions described here may not be available on some products. Design and specifications are subject to change without notice.



KONICA MINOLTA

KONICA MINOLTA BUSINESS SOLUTIONS (CANADA) LTD.  
5875 Explorer Drive, Suite 100  
Mississauga, Ontario, L4W 0E1  
[www.konicaminolta.ca](http://www.konicaminolta.ca)



KMCA-MOBTHERM-B-15092022-EN