



KONICA MINOLTA

AccurioPrint
2100

STREAMLINED INPUT AND OUTPUT FOR MONOCHROME PRINTING

RETHINK PRODUCTION PRINT



Giving Shape to Ideas

EFFICIENT, VERSATILE AND AFFORDABLE MONOCHROME PRINTING

INTRODUCING THE AccurioPrint 2100 FROM KONICA MINOLTA

The AccurioPrint 2100 is a valuable addition to any print production environment, with high-speed 100 ppm B&W output, high paper and toner capacity, standard built-in print controller and a compact footprint to save space on your production floor. It's ideal for a central in-house printing facility, a print-for-pay or an office environment with high-volume printing needs. Efficient and enhanced B&W print quality is easy with the 2100's sturdy construction, high performance and smart inline finishing options teamed up with advanced technology. Also included: high-performance colour scanning capability with dual-scanning automatic document feeding combined with the powerful print engine. Create the output your customers want – and the opportunities you need for long-term growth – with the AccurioPrint 2100.

Get more from your investment

The AccurioPrint 2100 reflects our partnership with customers in the industry who plan to grow their monochrome business. So we've improved set-up times to enhance your production time and built in the capabilities your customers want. Combine this production printer with one of our software offerings and automate your workflows to add even more value to your investment.

Rely on this smart engine

The AccurioPrint 2100 is an exceptionally reliable production machine. And with its variety of inline finishing options, you can meet your clients' every need.

Improve efficiencies

In addition to simple set-up, operators of our production systems can count on an ultra-reliable paper path, exceptional productivity and outstanding automated image stability. Our R&D team works with our customers to meet their demands in today's printing industry.





INNOVATE PRINT

RETHINK TECHNOLOGY

Pioneering technologies

The AccurioPrint 2100 delivers connectivity to common solutions applications such as OpenAPI and IWS so that you can access accounting, scanning or customized panel functions, quickly and easily.

Convenient front-to-back registration adjustment

AccurioPrint 2100's front-to-back adjustment function automatically adjusts image position by using the scanner. The front-to-back side position and discrepancies in magnification are easily corrected, vastly improving the efficiency of registration adjustment.

Media Detection Sensor

The optional Intelligent Media Sensor IM-101 automatically detects the type, weight, thickness and surface of each substrate and proposes the appropriate paper settings. With incorrect paper settings a thing of the past, now you can avoid misprints and waste.

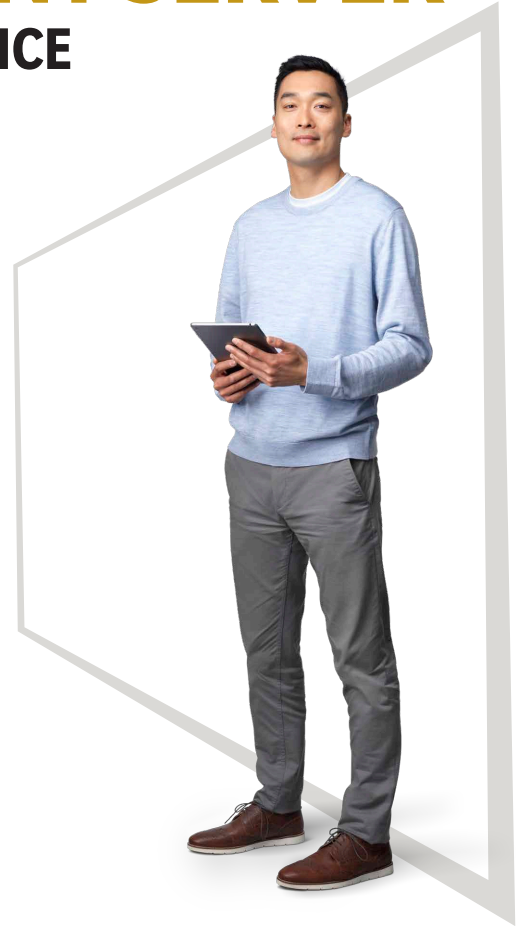


INTEGRATED PRINT SERVER

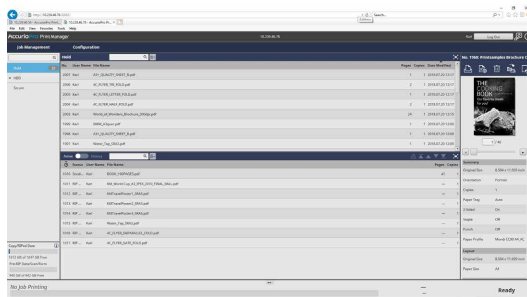
RETHINK YOUR USER EXPERIENCE

KONICA MINOLTA'S OWN CONTROLLER TECHNOLOGY

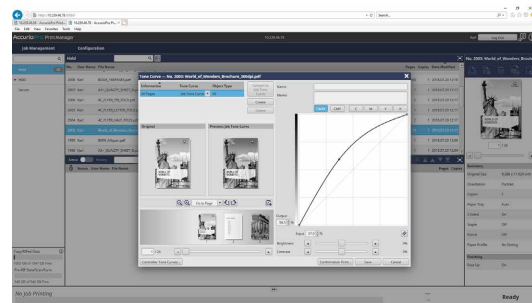
- High-resolution printing is attributed to a real output of 1,200 dpi. Thin lines for tables, graphs and multi-gradient images are vividly reproduced, contributing to the creation of persuasive documents.
- When colour documents are printed, the input image is converted into CIE colour space and then into the main unit's colour space. The main unit processes rich gradients while maintaining high productivity.
- AccurioPro Print Manager is a standard tool that helps you to get the most out of your print production with fast and easy job management. It offers various functions to improve the overall workflow such as job monitoring, editing or hot folder functions.



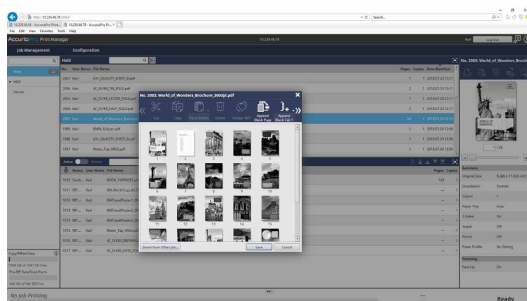
FUNCTIONS AND FEATURES



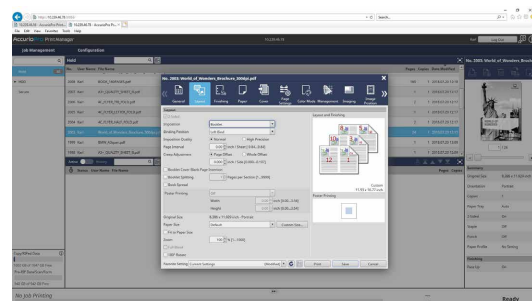
QUEUE MANAGEMENT



TOPE CURVE UTILITY



PAGE EDITING



JOB PROPERTIES



STREAMLINE YOUR PRODUCTION

RETHINK YOUR WORKFLOW

Evolving from our expertise in precision technologies and more than 80 years of experience in the printing and imaging industries, AccurioPro reflects our commitment to developing market-shaping technology with functionality that enables your business to grow. AccurioPro, Konica Minolta's suite of digital solutions for professional printing, is one of the industry's most versatile and powerful tools to optimise print production operations and workflows.

For all printing companies looking to integrate their printing, and businesses that use digital printing to produce their own in-house publications and

promotional materials, AccurioPro boosts speed and efficiency, expands capabilities and services, and reduces the need for operational manpower – all of which will streamline your print jobs and boost your profitability.

The comprehensive suite of features that AccurioPro offers includes centralized management, software for automated workflow processing, colour management, seamless integration of different printing technologies and full connectivity of all Konica Minolta printing systems used – from input to output.

AccurioPro

POSSIBILITIES

RETHINK YOUR WORKFLOW



YOUR ADVANTAGES WITH AccurioPrint 2100

RETHINK PRINT-FOR-PAY

DURABLE PERFORMANCE

- Up to 100 8.5" x 11" pages per minute
- Up to 56 11" x 17" pages per minute

READY-MADE PRINT PRODUCTS

- Stacking of up to 4,200 sheets
- Two-point and corner Stapling of up to 100 sheets with automatic staple cut mechanism
- Booklet Making up to 80 pages (20 sheets)
- 2- and 3 -hole punching
- Tri-folding up to 3 sheets

GEARED-UP FINISHING

- ZU-608 for z-folding and punching of sheets
- GBC Punch G3 with different die sets for punching, creasing and perforation
- GBC Wire G1 for 8.5" x 11" and 5.5" x 8.5" wire bound books



ENVIRONMENTAL AWARENESS

- Green procurement policy
- Reduced CO₂ emissions

ENHANCED SCANNING PERFORMANCE

- Dual colour scanner to scan documents in one pass
- Double sheet detector
- Max. 240 ipm (8.5" x 11", 300 dpi)
- Scanner capacity of 300 sheets

HIGH-END PRINT CONTROL

- Proprietary Konica Minolta controller
- AccurioPro PrintManager to optimize overall workflow



EASE OF USE

- Simple paper catalog settings
- Easy-to-follow on-screen instructions

SOPHISTICATED MEDIA HANDLING

- Optional bypass tray
- Up to 9,000-sheet paper input capacity
- Up to 5 paper input trays

PERFECT IMAGE QUALITY

- 1,200 x 1,200 dpi resolution
- Simitri[®] HD toner technology
- Image density control technology

COMPREHENSIVE MEDIA PROCESSING

- Up to 300 gsm paper weight in simplex and duplex printing
- Mechanical decurling as standard
- Optional IM-101 Intelligent Media Sensor to automatically identify paper weight and type

FINISHING & FUNCTIONS



Letter fold



2/3 hole Punching



Two-point stapling



Corner stapling



Stacking



Booklet



Z-fold

Open stacker
OT-512



Staple finisher
FS-532m



Ring binding unit
GBC G1

















Multi punching unit
GBC G3



Z-Folding unit
ZU-608



 Creasing	 Slitting	 Perforation	 Square-folding	 Multi Letter fold-In	 Post Insertion	 Perfect Binding	 Wire-binding	 Multi-punching
								
								
								

 standard  optional



TAKE LEADERSHIP AND RESPONSIBILITY

RETHINK TOMORROW'S BUSINESS

MADE FOR YOUR BUSINESS

Commercial printers

Growing your business and getting the most from your investment is what the AccurioPrint 2100 Series promises to deliver. The high speed, productivity and uptime help you achieve the shortest turnaround times so that you can run more jobs each week. Combined with the exceptional media flexibility – using stocks of up to 350gsm – you can further enhance the offerings of your print shop. And quality issues aren't an issue, because these presses offer a wide range of tools to control and adjust themselves.

CRDs

AccurioPrint 2100 supports a high degree of automation and yet also ensures high-level quality. Professional inline finishing produces ready-made print products at the click of a button. Versatile media flexibility and high productivity make AccurioPrint 2100 a solid and lucrative investment for the future.

DESIGNED FOR OUR PLANET

Konica Minolta promotes sustainable development and integrates environmental and social perspectives into its business strategies. Konica Minolta products support your green strategy – and that helps to build your business, too.

Committed to helping prevent global warming, Konica Minolta strives to reduce CO₂ emissions during product manufacture, product distribution, at the sales stage, and during product use – with even stricter targets than demanded by the Kyoto Protocol. Enabling carbon neutrality, Konica Minolta offers its customers the offset of unavoidable CO₂ emissions for production printing. Together with the experts from Climate Partner, Konica Minolta proposes a new and profound eco concept for our professional production presses.



CONTROLLER

RETHINK PRODUCTIVITY

KONICA MINOLTA CONTROLLER

Type	Built-in
Resolution	Print: 1,200 x 1,200 dpi; 600 dpi x 600 dpi Scan: 200 dpi, 300 dpi, 400 dpi, 600 dpi
CPU	Pentium G4400 3.3 GHz
Memory	12 GB (DDR4 U-DIMM x2) 2,133 MHz
HDD	1 TB (SATA/ 7,200 rpm / 3.5 inch)
SSD	4 GB
Interface	Ethernet 10/100/1000BASE-T; SB 3.0 host
Page Description Language	PCL5E/XL (PCL6); Adobe PostScript 3 (PS3020); PDF directprint (PDF Ver.1.7); TIFF (TIFF Ver.6) direct print; PPML (Ver 2.2)

TECHNICAL SPECIFICATIONS

RETHINK INNOVATION

SYSTEM SPECIFICATIONS

Resolution	1,200 x 1,200 dpi
Paper weight	40–300 gsm (350 gsm optional*)
Duplex unit	Non-stack type; 40–300 gsm
Paper sizes	Standard: Min.: 7.17" x 5.47" (182 x 139 mm) Max.: 12.76" x 18.23" (324 x 463 mm) Optional: Min.: 3.74" x 5.47" (95 x 139 mm)* Max.: 12.76" x 19.02" (324 x 483 mm)**
Maximum image area	314 x 463 mm (up to 483 mm** optional)
Paper input capacity	Standard: 3,000 sheets Max.: 9,000 sheets
Paper output capacity	Max.: 4,200 sheets
Main unit dimensions (W x D x H)	38.98" x 35.83" x 57.24" (990 x 910 x 1454 mm)
Main unit weight	765 lbs (347 kg)

PRODUCTIVITY

8.5" x 11"– max. per minute	100 ppm
11" x 17"– max. per minute	56 ppm
12" x 18"– max. per minute	53 ppm
8.5" x 11"– max. per hour	6,000 pph
11" x 17"– max. per hour	3,300 pph
12" x 18"– max. per hour	3,120 pph

CONTROLLER

Embedded Konica Minolta controller

SCANNER SPECIFICATIONS

Scan speed 8.5" x 11"	Up to 240 opm
Scan resolution	600 x 600 dpi
Scan modes	Scan to HDD; Scan to FTP; Scan to PC; Scan to eMail; Scan to WebDAV; Scan to USB Memory; HDD to FTP/SMB/WebDAV; LDAP supported
Scan formats	TIFF; PDF; PDF(PDF/A); Encrypted PDF; XPS; CompactPDF; JPEG

COPIER SPECIFICATIONS

Gradations	256 gradations
FCOT	Less than 3.4 sec. (8.5" x 11" LEF)
Magnification	25–400%, in 0.1% steps
Multiple copies	1–9,999

ACCESSORIES

Large capacity tray 8.5 x 11"	LU-414
Large capacity tray 12 x 18"	LU-415
Air assist paper feed unit	PF-709
Stapling unit	FS-532m
Saddle stitch kit for FS-532	SD-510
Punch kit for FS-532	PK-525
Post inserter for FS-532	PI-502
Multi bypass tray	MB-507
Output tray	OT-507
Open stacker	OT-512
Mount kit for 3rd party	MK-737
Wire binding unit	GBC Wire G1
Inline Multi-punch unit	GBC Punch G3
Relay unit	RU-518m
Humidification unit	HM-103

* With PF-709 + small size guide

** With LU-415

- All specifications refer to letter-size paper of 80 gsm quality.
- The support and availability of the listed specifications and functionalities vary depending on operating systems, applications and network protocols as well as network and system configurations.
- The stated life expectancy of each consumable is based on specific operating conditions such as page coverage for a particular page size (5 % coverage of letter).
- The actual life of each consumable will vary depending on use and other printing variables including page coverage, page size, media type, continuous or intermittent printing, ambient temperature and humidity.
- Some of the product illustrations contain optional accessories.
- Specifications and accessories are based on the information available at the time of printing and are subject to change without notice.
- Konica Minolta does not warrant that any prices or specifications mentioned will be error-free.
- All brand and product names may be registered trademarks or trademarks of their respective holders and are hereby acknowledged.

About Konica Minolta

Konica Minolta can help give shape to your ideas and partner with you to achieve your corporate objectives. Contact us to realize opportunities in:

INTELLIGENT INFORMATION MANAGEMENT

Cloud Information Management
Content Management
Automated Workflow Solutions
Business Process Automation
Security and Compliance
Mobility

IT SERVICES

Application Services
IT Security Assessments
Hybrid and Private Cloud
Business Continuity
24/7 Help Desk
IT Resources and Consulting

TECHNOLOGY

Office Multifunction Business Solutions
Commercial and Production Printers
Wide Format Printers
Laptops, Desktops and Computer Hardware
Servers and Networking Equipment
Managed Print Services (MPS)

For more information about Konica Minolta products and solutions, please visit: www.konicaminolta.ca

© 2022 KONICA MINOLTA BUSINESS SOLUTIONS (CANADA) LTD. All rights reserved. Reproduction in whole or in part without written permission is prohibited. KONICA MINOLTA and the KONICA MINOLTA logo are registered trademarks or trademarks of KONICA MINOLTA, INC. All other product and brand names are trademarks or registered trademarks of their respective companies or organizations. All features and functions described here may not be available on some products. Design and specifications are subject to change without notice.



KONICA MINOLTA

KONICA MINOLTA BUSINESS SOLUTIONS (CANADA) LTD.

5875 Explorer Drive, Suite 100

Mississauga, Ontario, L4W 0E1

www.konicaminolta.ca



KMCA-AP2100-B-190122-EN