



Future-proof your business with a powerful competitive edge

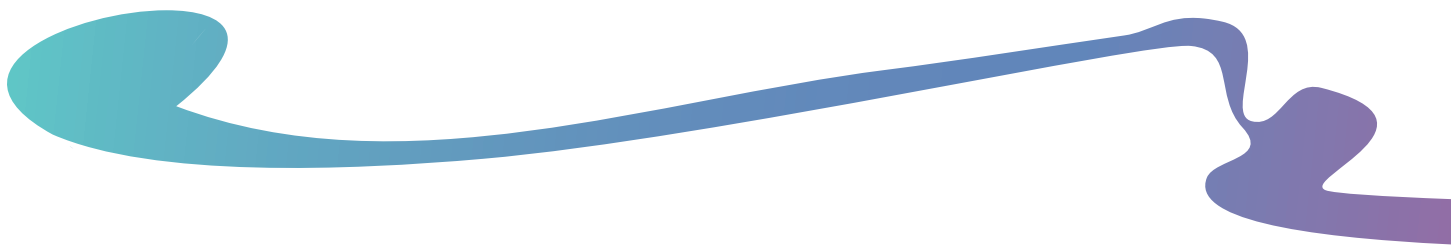
For today's forward-thinking, high-volume sign and display graphics printers who want to lead, not follow, the EFI™ VUTEK® h series platform is the future of digital printing.



The EFI VUTEk h3 is the future of digital printing, right now. We have reimaged, reinvented, reengineered, and refined the high-volume, superwide-format hybrid inkjet platform from the ground up. The result is huge revolutionary leaps that take your business higher in terms of productivity, print quality, reliability, capability, and profits. All with the ease of use and LED environmentally-friendly benefits you expect from an industrial-built VUTEk printer from EFI.

At a glance

- Next-generation, 3.2-meter hybrid roll/flatbed LED inkjet printer platform
- Print resolution up to 1200 dpi
- Four (optional) or eight colour modes plus white, and up to nine-layer print capability in a single pass
- Productivity up to 74 boards per hour
- Field upgradeable to the VUTEk h5 model with productivity up to 109 boards per hour
- High-velocity UltraDrop™ Technology 7pL grayscale printheads deliver precision dot placement and consistency from print to print at high production speeds
- Powerful EFI LED technology
- Skip-white functionality in x and y direction
- Mechanical crash and wrinkle detection and media height measurement for even greater printing accuracy and consistency
- *ImageEdge* technology for fast and easy printhead replacement
- Touch screen monitors on printer's input and output side
- Automated table and carriage alignment
- Camera-based vision system for subpixel alignment, printhead density balance, and step and bidirectional set up
- Modular drop-in ink delivery system design eliminates ink waste and provides fill-while-printing functionality for continuous productivity
- DC power supply and safety programmable logic controller (PLC) with fewer connection points for higher efficiency, reliability, and uptime
- Built-in power monitoring and on board diagnostic features (LED check points) for faster troubleshooting for both remote and on-site service
- Automated media handling options to meet any production need, including new 3/4 automated media loading and stacker systems and super duty winders
- EFI Fiery® proServer Premium digital front end with Fiery Command WorkStation®, FAST RIP and enhanced colour management and screening features
- Cloud and diagnostics services, including EFI GO mobile management application



The ultimate printing innovation — UltraDrop Technology from EFI



Demanding customers want ultra quality, ultra crispness, and ultra capabilities.

That's why EFI's UltraDrop Technology offers smaller drop sizes and more precise control. The results are ultra impressive:

- Native 7pL printheads with true multi-drop addressability
- High apparent resolution and high-definition print quality
- Outstanding smoothness in shadows, gradients, and transitions
- Superb text quality with three-point text in both standard and high quality with fewer satellites and more clarity in all print modes

The power of green LED technology



Brilliantly designed "cool cure" LED technology empowers you with the ability to do more for less. Increase your profit opportunity

by offering more premium-margin jobs while reducing operating costs and your environmental footprint:

- Extends your range of supported substrates, including lower cost and added-value specialty media
- Increases uptime and productivity with instant on/off and less maintenance
- Drives down operating costs with up to 82% less energy consumption according to a Fogra study* and fewer consumable parts
- Reduces waste with consistent colour output and simple operation
- Satisfies customer requests for a greener print solution with low VOCs, lower power consumption, and less waste and consumables

*EFI's VUTEk LED printers show energy reductions of up to 82% when compared with devices with conventional mercury arc lamps. Calculations from Fogra's Energy Efficiency Project, or "Energy Efficiency of Large and Small Format Printing Systems."



EFI VUTEk h3

Media/handling

- Handles flexible and rigid substrates up to 126 in (3.2 m) wide and up to 2 in (5.08 cm) thick
- Maximum sheet weight: 200 lbs (90.7 kg)
- Multi-roll capable: two 60 in (152 cm) rolls
- Maximum roll weight: 400 lbs (180 kg)
- Maximum roll diameter: 12 in (30 cm)
- Automated media handling options:
 - Wide heavy-duty and roller tables
 - Material Edge Guides (MEG)
 - Three-quarter automated media loader and stacker
 - Super duty winder and rewinder

Productivity

- VUTEk h3 up to 74 boards per hour
- VUTEk h5 up to 109 boards per hour

Environmental considerations

- Compressed air: 110–145 psi maximum at 16 CFM (7.5–10 bar at 453 l/min) — dry air only (not included)
- Fully enclosed design for operator safety and environmental considerations
- Temperature: 68 °F–86 °F (20 °C–30 °C)
- Humidity: 30%–80% (non-condensing)
- Machine weight: 7,495 lbs (3400 kg)
- Printer dimensions (L x W x H): 61 in x 254 in x 76 in (155 cm x 645 cm x 193 cm)
- Electrical: 400-480 VAC at 30 Amps, 3 phase (N. America/Europe); 50 or 60 Hz; four wire (3 phase + Earth Ground)

Genuine EFI Inks

- Supplied in 5.0 liter containers
- Expanded gamut CMYK pigments for world-class Pantone® matching
- EFI pigment dispersions ensure optimized size and concentration for best-in-class ink stability

EFI Fiery digital front end

- Ships and optimized for use with the EFI Fiery proServer Premium, featuring:
 - FAST RIP (Fiery Accelerated System Technology)
 - Spot Color, Color Profiler, Color Verifier, Cut Marks, and File Export options
 - EFI ES-2000 spectrophotometer
 - Optimized for one EFI printer
 - 1x M–XXL printer option
 - Fiery Sign Flow option
- Powerful production tools, such as nesting, step and repeat, scaling, cropping, barcode creation, and tiling
- Advanced ICC colour management for reliable colour, quality output, and proofing-quality colour
- Built-in spot colour libraries and sophisticated spot colour handling
- Bidirectional communication capability between the Fiery XF digital front end (DFE) and printer allows back communication of audit information on every print job
- Part of the EFI ecosystem integrating to EFI Pace® and Digital StoreFront™

National Service Program

- Industry-leading service and support program available across Canada
- Local service coverage for all major Canadian cities

EFI fuels success.

We develop breakthrough technologies for the manufacturing of signage, packaging, textiles, ceramic tiles, and personalized documents, with a wide range of printers, inks, digital front ends, and a comprehensive business and production workflow suite that transforms and streamlines the entire production process, increasing your competitiveness and boosting productivity. Visit www.efi.com or call 650-357-3500 for more information.



Nothing herein should be construed as a warranty in addition to the express warranty statement provided with EFI products and services.

The APPS logo, AutoCal, Auto-Count, Balance, BESTColor, BioVu, BioWare, ColorPASS, Colorproof, ColorWise, Command WorkStation, CopyNet, Cretachrom, Cretaprint, the Cretaprint logo, Cretaprinter, Cretaroller, Digital StoreFront, DocBuilder, DocBuilder Pro, DockNet, DocStream, DSPdesign Studio, Dynamic Wedge, EDOX, EFI, the EFI logo, Electronics For Imaging, Entrac, EPCount, EPPPhoto, EPRRegister, EPStatus, Estimate, ExpressPay, FabriVU, Fast-4, Fiery, the Fiery logo, Fiery Driven, the Fiery Driven logo, Fiery JobFlow, Fiery JobMaster, Fiery Link, Fiery Navigator, Fiery Prints, the Fiery Prints logo, Fiery Spark, FreeForm, Hagen, InkIntensity, Inkware, LapNet, Logic, Metrix, MicroPress, MiniNet, Monarch, OneFlow, Pace, Pegasus, Pegasus Vision, PhotoXposure, PressVu, Printcafe, PrinterSite, PrintFlow, PrintMe, the PrintMe logo, PrintSmith, PrintSmith Site, PrintStream, Print to Win, Prograph, PSI, PSI Flexo, Radius, Remoteproof, RIPChips, RIP-White-Print, Screenproof, SendMe, Sincolor, Splash, Spot-On, TrackNet, UltraPress, UltraTex, UltraVu, UV Series 50, VisualCal, VUTEk, the VUTEk logo, and WebTools are trademarks of Electronics For Imaging, Inc. and/or its wholly owned subsidiaries in the U.S. and/or certain other countries.

All other terms and product names may be trademarks or registered trademarks of their respective owners, and are hereby acknowledged.