

**Better, faster, smarter color.**



**Full Color Printer/Copier/Scanner/Fax.** Input, output, sharing, storing. Spectacular color. Workhorse B&W. Built-in Emperon Print System. Powerful on-board software. All based on bizhub OP, to raise the standard of multifunctional productivity. Nothing left out – and no compromise with quality.

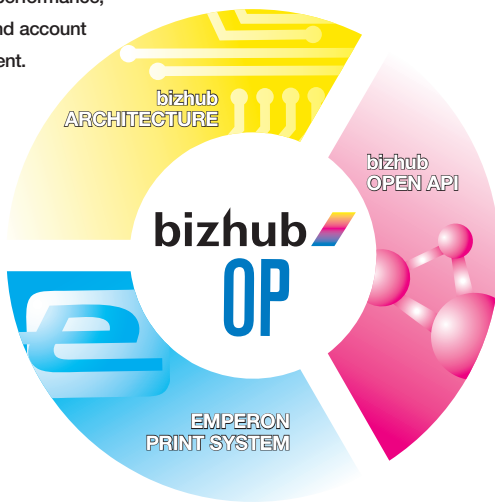


The essentials of imaging

It's all happening at bizhub OP. All-in-one bizhub OP design runs all functions on one CPU and memory subsystem, giving you a powerful central document resource with three important benefits for multifunctional productivity:

**bizhub Architecture:**

improves performance, security and account management.



**bizhub Open API:** will allow custom integration with third-party software.

**Emperon Print System:**

integrates fast document output with simple user interface.

**A superior all-in-one solution: bizhub OP.**

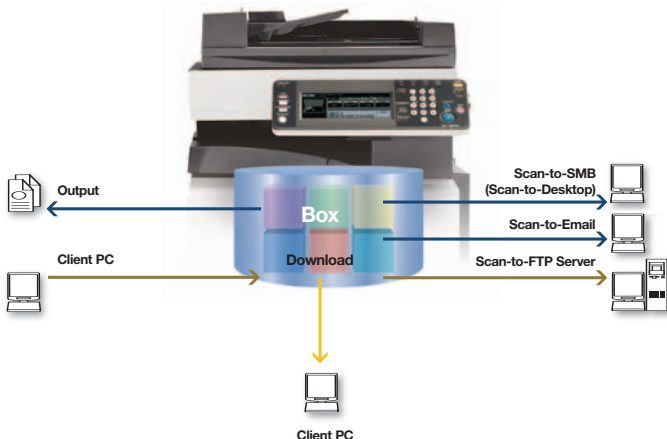
Inside the bizhub C450, there's a revolution going on – replacing separate circuit boards with common system software that drives all functions: copy, print, scan, even fax. There are three components to Konica Minolta's bizhub OP, each providing important benefits for multifunctional productivity. New bizhub Architecture runs every function on one CPU and memory subsystem, improving performance, enhancing security and integrating device and account management. The next-generation Emperon Print System seamlessly integrates document output management with simple, consistent user interface. And bizhub Open API will soon allow print/scan control from external applications, for custom integration with third-party software to meet specialized business needs.

**It all happens from your central bizhub.**

Information flows in, documents flow out. With speed that keeps you ahead of the busiest traffic: 45 ppm B&W, 35 ppm color, up to 38 opm scanning. First-copy output of up to 5.5 seconds helps you work faster, providing a true monochrome replacement for your current printer/copier. And increased scanning speed lets you move information in any direction that matches your workflow: Scan-to-Email, Scan-to-FTP, Scan-to-SMB (Scan-to-Desktop), Scan-to-HDD (Scan-to-User Box). SMTP Authentication allows Email from the bizhub C450 to pass easily through ISP servers. There's even a fax option for high-volume transmission/reception. All to put you at the power center of your business – coordinating your input, connecting with co-workers, maintaining security and achieving your productivity goals.

## Better value in high-speed color.

Sure, you need color – but you don't need extra devices, slower speed or higher cost. With Konica Minolta bizhub C450, you'll have fast-output, high-quality color when you want it. Plus B&W production power and functionality for everyday document demands. And much, much more – in a bizhub design that scans and stores, prints and finishes, manages and controls all your documents and devices.



**User Box, User Authentication and more.**

The bizhub C450 doesn't just move your information – it also stores your files. With User Box function, you can save documents directly to individual mailboxes on a built-in 40 GB hard disk drive. An individual User Box can store up to 200 files, with total HDD capacity of 1,000 User Boxes and 9,000 pages of data. User Boxes can be password-protected and support all functions: copy, scan, fax, print. With User Authentication, Account Track and security enhancements to protect your information.



### The advantage of the Emperon Print System.

Your bizhub C450 won't require an ordinary print controller – it already has full print/copy productivity built-in, including 600 MHz CPU, PCL 5e/5c, PCL 6 (XL 2.1) and PostScript 3 emulation, multiple print drivers and connectivity protocols. Our own unique Emperon Print System makes it all possible. The benefit for you is simple: higher value.

### PageScope: manage, control, connect.

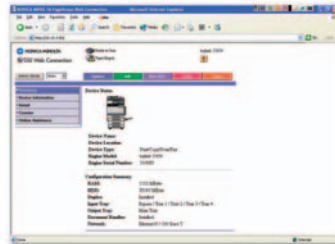
A stand-alone approach can't stand up to today's demands. So with bizhub C450, you're connected – with powerful PageScope software applications right on your motherboard. PageScope Web Connection, for one-on-one web-based setup and status check. PageScope Net Care and PageScope Network Setup, for managing multiple devices from a single desktop PC. PageScope Data Administrator, for importing one-touch Email and fax addresses direct from an LDAP-compliant server or another bizhub device. PageScope EMS Plug-Ins and PageScope NDPS Gateway, for seamless interface with enterprise and distributed printing environments. It all adds up to real network productivity.

### What makes bizhub right for you?

Good question. Simple answer: it does everything you want it to. If you're moving to color, it gets you there faster and more cost-effectively. If you're moving up in color, an IC-402 Image Controller option gives you professional Fiery® color management and graphic arts functions. If you're expanding in-house color production, you'll have automated ways to print and finish. And if your goal is more work at less cost, bizhub C450 is your "right-size" solution – a perfect fit for your needs, your space, your end-users and your bottom line.



**Section 508 compliance.** With big keys, clear menus, simple touch-screen interface and design that tilts in three positions for wheelchair access, the bizhub C450 is in full compliance with Section 508 – designed for easy access by individuals with disabilities. This philosophy extends to front-loading paper trays, convenient height and reach, adjustable display contrast, and accessible machine interiors for adding toner and replacing cartridges.



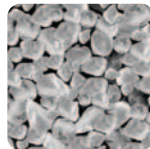
**A website for your bizhub.** PageScope Web Connection makes it easy to monitor status, adjust print settings, display detailed information, review meter counts, set one-touch addresses for scanned data.

## Simitri

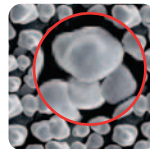
Just any color isn't good enough.  
Our exclusive Simitri® Color

Polymerized Toner uses ultra-fine particles for sharper lines and clearer details. Your bizhub C450 also adds advanced technologies for spectacular color halftones, precision color accuracy and more consistent color output.

Pulverized



Simitri®





Advanced Grouping/Sorting

Multi-Position Stapling

2-Hole/3-Hole Punching

60-Page Booklet-Making

Auto Duplexing

12" x 18" Full-Bleed Printing

### Tools to manage all your printing.

Built-in print system lets you print and finish with desktop point-and-click simplicity – and the bizhub C450 also gives you special ways to manage printing more effectively. PageScope Job Spooler helps you manage job queues and reprint jobs faster. And advanced operation features let you change job order, adjust job settings, and execute multiple jobs simultaneously.

### Security functions to keep you protected.

Your bizhub C450 has many ways to keep files, documents and print jobs secure. User Authentication can prevent unauthorized users from accessing or changing job parameters, and enable/disable specific functions. Account Tracking can help you monitor the flow of information. Password protection limits access to User Box files. ISO-15408 Level 3 security\* helps you comply with local regulations. The bizhub C450 comes with Job Erase\*\*, a feature that will overwrite HDD files after every job, to comply with DoD 5220.22-M and NAVSO P-5239-26. The bizhub C450 can also be sanitized prior to movement or disposal by overwriting its HDD with random values.

### Built-in document feeding and duplexing.

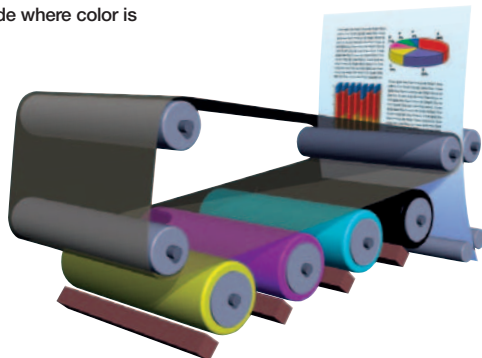
Others might call them options – but with bizhub, they're standard. Standard 100-sheet Auto Document Feeder, to help you copy, scan, and print hard-copy documents more quickly. Standard Auto Duplexing, to let you save paper by copying and printing documents front-to-back. No wonder we're raising the standard for in-house productivity.

## Faster color printing and finishing.

Schools. Churches. Healthcare providers. Real estate. Finance. Manufacturing facilities. Retail locations. Offices, big and small. Everyone is printing more in color, doing more in-house and on-demand – because color communicates more effectively. And bizhub C450 is designed to speed your output, increase your quality and control your costs.

#### Color never slows you down.

With Tandem Processing, all four colors are applied on a single pass. The result is color print/copy speed of up to 35 ppm, so you never have to decide where color is more important than output speed.



#### The size, weight and stock you need.

With bizhub C450, you'll have fast print output: 45 ppm in B&W, 35 ppm in color. You'll have the capability to load up to 140 lb. index stock in all drawers. Automatic duplexing is also available for 140 lb. stock. You can print on coated stock, OHP transparencies and envelopes – even output 11" x 17" full-bleed originals on 12" x 18" paper, preserving borders and crop marks. And 3,400-sheet total capacity (with options) lets you work longer without reloading.

\* Available in Summer 2005.

## Finishing power for on-demand printing.

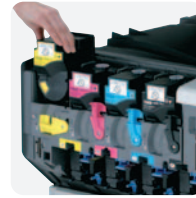
In-house productivity depends on fast, efficient finishing – to output documents that don't have to be sorted, punched, stapled or folded by hand. With bizhub C450, you'll have all the auto-finishing options you need – even the power to produce 60-page booklets, saddle-stitched and center-folded. You can even perform mix-media or mixplex as well as cover insertion direct from paper cabinets.

## Why print color in-house?

Because sending color work to a print shop takes time, costs money, and lets sensitive information out of your control. With bizhub C450, you can also revise and reprint as often as necessary – and only print as many documents as you need, to eliminate the waste of costly overruns or obsolete printed inventories that have to be disposed of.

## Easy-access maintenance.

Changing toner is simple and clean, because toner bottles are easily accessible. So is the paper path, to quickly clear misfeeds and maximize uptime.



### Standard Hard Disk Drive

40 GB HDD for scanning and saving documents in User Boxes. (Not shown)

### Punch Kit

PK-501 adds 2/3 hole-punch capacity to your Booklet Finisher.

### Standard Auto Document Feeder

DF-601 with 100-sheet capacity and smooth, quiet operation.



### Job Separator Tray

JS-601 lets you separate prints, copies, and faxes for easy retrieval (for FS-507 only).

### Staple Finisher

FS-507 with standard 2/3 hole-punch, lets you sort, group, multi-position staple and hole-punch documents. (Not shown)



### Standard Emperon Print System

with PS3 and PCL 6 for next-generation document output.

### Booklet Finisher

FS-603 center-folds and saddle-stitches up to 60-page booklets.



### Standard Duplexing

Automatically outputs 2-sided copies and prints to save paper.

### Manual Bypass

150-sheet capacity, in paper weights up to 140 lb. index.



### Large Capacity Cassette

2,500-sheet LCC supports weights up to 140 lb. index and raises your maximum paper capacity to 3,400 sheets.

### Standard Paper Feed Cabinet

Universal Multi-Purpose Cassette holds up to 250 sheets and standard Universal Drawer holds up to 500 sheets – both supporting weights up to 140 lb. index.

### Dual Paper Feed Cabinet

PC-202 holds up to 1,000 sheets and supports weights up to 140 lb index, in two 500-sheet universal drawers.

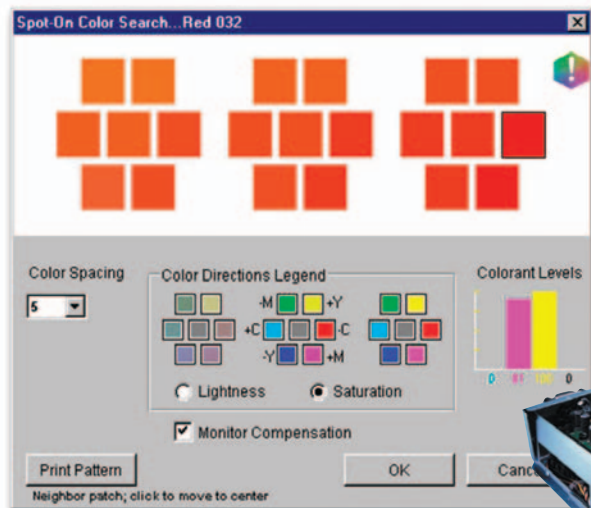
### Paper Feed Cabinet/Drawer

PC-102 holds up to 500 sheets and supports weights up to 140 lb. index, with extra storage drawer. (Not shown)

### Super G3 Fax Board

33.6 Kbps modem speed with JBIG data compression and F-Code support. (Not shown)





**Spot-On Color Matching**

allows you to match colors accurately and consistently – and comes standard on the IC-402 Image Controller.

**Color to match professional requirements.**

With its standard Emperon Print System, the bizhub C450 handles all your everyday color printing needs. Need more? Add an IC-402 Image Controller option, and take advantage of the industry's most sophisticated system for in-house color production. EFI Impose™ lets you preview, edit and assemble documents more quickly. RIP-While-Print® and Continuous Print™ capabilities keep your output moving. And Fieri's® Command Workstation™ version 4.2 interface lets you control job functions from remote PCs, preview thumbnails and full-screen color images, maintain and update archives, create job logs and more – all customized to suit your workflow. Spot-On color matching is also standard on the bizhub C450.

## Smarter solutions for color control.

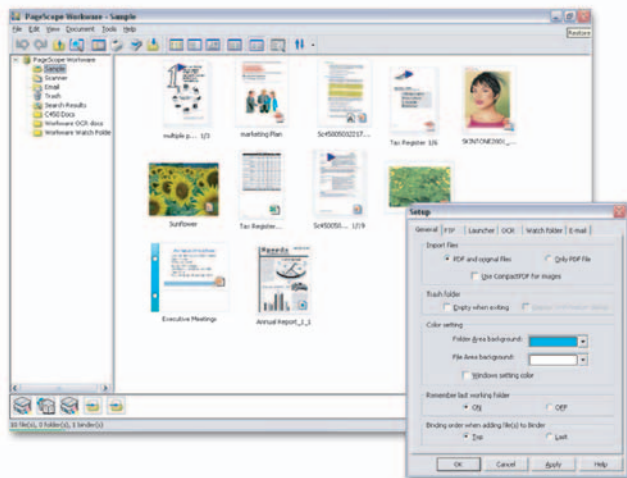
In color, the bizhub C450 is a real pro. With versatile settings for specialty printing, from postcards to multi-page enlargements. Professional options for color management, color matching, even simulating offset presses and paper stock. Plus powerful software enhancements to manage document files more easily – even scan and distribute documents in a single step.

**More ways to get your color right.**

You'll have power tools to adjust colors, match samples, and maintain consistent output. Fieri® ColorWise® Pro can work in any color space, control RGB and CMYK independently, edit simulations and output profiles. You can also add Fieri® Graphic Arts Options, such as Auto Trapping, Hot Folders. There's even an EFI Color Profiler option to help you match any color using a simple hand-held spectrometer that measures precise color value.

**Networking and web-based management.**

Fieri® NetWise® architecture provides seamless connectivity on all popular networks, with automatic IP configuration and peer-to-peer support. And Fieri® WebTools™ help you manage print jobs more quickly and efficiently through any Java-enabled web browser.



**No more confusing filenames.**

With PageScope WorkWare®, you can manage all your files more easily – view documents as thumbnail images, search and retrieve information more quickly, and print or distribute with drag-and-drop speed.



**Your personal document management resource.**

There's a better way to find, retrieve and share your files: PageScope WorkWare.\* It lets you view documents as thumbnail images, drag-and-drop to share or print, and search your files by filename, date, tags, even a combination of criteria – or perform full-text search on documents that have been OCR-converted.

**The power to move information faster.**

Another valuable PageScope option can automatically route scanned files to unlimited destinations. With PageScope Router, you can scan and distribute in a single step, convert file formats on the fly, even use automatic archiving to preserve document histories and paper trails. And the faster your information moves, the more productive your workflow can be.



**Postcard Mode.**

Produce vivid color or monochrome images on heavy-stock and glossy paper for direct-mail use.





# bizhub C450

## General Specifications:

### TYPE:

Full-Color Printer/Copier/Scanner with Stationary Platen

**PRINT/COPY PROCESS:** Tandem Process

### TONER TYPE:

Simitri® Color Polymerized Toner

**MONTHLY DUTY CYCLE:** 125,000 pages

### PRINT/COPY SPEED:

Full Color: 35 ppm (letter, portrait)  
B&W: 45 ppm (letter, portrait)

**SCAN SPEED:** Up to 38 opm

**PRINT/COPY RESOLUTION:** 600 x 600 dpi (enhanced resolution: 600 x 1800 dpi)

**GRADATION:** 256 color shades per pixel

### ORIGINAL SIZE:

Up to 11" x 17" (scanning/copying)  
Up to 11" x 17" full-bleed on 12" x 18" paper (printing)

### COPY SIZE:

Multi-Purpose Cassette:  
4" x 6" to 12" x 18"  
Universal Cassette:  
5-1/2" x 8-1/2" to 11" x 17"  
Multiple Bypass:  
4" x 6" to 12" x 18"

**WARM-UP TIME:** Less than 99 seconds

### FIRST COPY:

Full color: less than 8.5 seconds (letter)  
B&W: Less than 5.5 seconds (letter)

**COPY QUANTITY:** 1 - 999

### MAGNIFICATION:

Zoom range: 25% - 400%,  
0.1% increments  
Preset reduction: 79%, 73%, 65%, 50%  
Preset enlargement: 121%, 129%,  
155%, 200%

### COLOR MODES:

Auto Color Mode  
Full Color Mode  
Black & White Mode  
2-Color Mode  
Single Color Mode

### COPY EXPOSURE MODES:

Text (legible text)  
Text/Photo (clear text and halftones)  
Photo (optimized for gradations)  
Map (fine edges and legible text)  
Dot Matrix (dot matrix originals)  
Copied Paper

### FAXING (with fax option):

Super G3 compatibility  
JBIG data compression  
33.6 Kbps moderm speed  
F-Code support

### FAX TRANSMISSION SPEED:

Approximately 2 seconds/page

### FAX EXPOSURE MODES:

Text, Text/Photo, Photo, Dot Matrix

### PAPER SUPPLY:

250-sheet multi-purpose cassette  
(16 lb. bond to 140 lb. index)  
500-sheet universal cassette  
(16 lb. to 140 lb. index)  
150-sheet bypass  
(16 lb. bond to 140 lb. index)

### MAXIMUM PAPER CAPACITY:

3,400 sheets (total, with options)

### DOCUMENT FEEDER:

DF-601 Standard Automatic Document Feeder  
Paper Capacity: 100 sheets  
Paper Size: 5-1/2" x 8-1/2" to 11" x 17"  
Paper Weight: Single-sided:  
10 lb. bond to 110 lb. index  
Double-sided: 13 lb. bond to 28 lb. bond

**POWER REQUIREMENTS:** 120 V, 60 Hz

**POWER CONSUMPTION:** Less than 1.5 Kw

### DIMENSIONS (W x D x H):

27-3/4" x 30" x 35-3/4"  
(standard configuration)

**WEIGHT:** 275-1/2 lbs.

### OPTIONS:

PC-102 Paper Feed Cabinet (500 sheets)  
PC-202 Paper Feed Cabinet (500 sheets x 2)  
PC-402 Large Capacity Tray (2500 sheets)  
FS-603 Booklet Finisher  
PK-501 Punch Kit (for FS-603 Booklet Finisher)  
IC-402 Image Controller  
VI-502 Video Interface Kit (for IC-402)  
FS-507 Staple Finisher  
JS-601 Option Tray (for FS-507 Staple Finisher)  
EK-702 Parallel/USB 2.0 I/F Kit  
MC-501 Mechanical Counter  
DK-501 Copy Desk  
FK-502 Super G3 Fax Board  
MK-703 Enhanced Option Connection  
MK-704 Fax Connection Kit  
Key Counter Kit

### Available Print/Copy Functions\*

Account Track (1,000 accounts)  
APS/AMS  
Auto Duplex  
Auto Reset  
Auto Tray Switching  
Bi-Directional Communication (Device Option Setting)  
Box Function (Store Copy Jobs, Print Jobs, Scans, Fax Data, Print Stored Data, Route Scanned Data)  
Color Modes & Functions  
Auto Color/Full Color  
Black & White Mode  
Single Color Mode  
2-Color Mode  
Color Adjustments (Brightness, Contrast, Saturation, Sharpness, Red, Green, Blue, Portrait, Hue Density, Color Balance, Copy Density, Sample Copy)  
Copy Modes (Simplex/Duplex, 2-in-1, 4-in-1, 8-in-one, Book, Booklet, Booklet + Bind)  
Cover Mode  
Creative Functions (Mirror Image, XY Zoom, Image Centering, Base Color, Negative/Positive Reverse, Image Repeat)  
Criss-cross Sorting  
Distribution No. Printing  
Energy Save Mode  
Enlarge Display  
Erase (Border, Frame, Edge) Mode  
Finishing (Group, Sort, Staple, Punch, Booklet Center-Fold and Staple)  
Form Overlay  
Glossy Mode  
HDD Random Erase  
Image Adjustments (Color Matching, Pure Black Auto ON/OFF, Color Balance, Screen Setting, Image Smoothing ON/OFF)  
Image Density Adjustment (Density, Background Removal)  
Image Preview (Job Finishing Image Display, Engine Configuration Display)  
Interrupt  
Job Erase\*\*  
Job List  
Job Reserve  
LDAP  
OHP Interleaving  
Mixplex, Mix-Media

### Available Print/Copy Functions Continued\*

Program/Recall Jobs  
Paper Size Selection (APS, Manual)  
Paper Type Selection (Normal, Thick 1, Thick 2, Thick 3, OHP)  
Proof Print  
Secure Printing  
Separate Scan  
Sleep Mode  
Text Enhancement  
User Authentication (Synchronize with Account Track)  
Utility (Meter Count, Environment Setting, Default Setting, OneTouch Setting, Check Consumable Life, Admin. Mode)  
Watermarks  
Zoom Selection (AMS, Fixed Zoom Ratio, User Programmable Zoom Ratio, Manual)

### Available Scan Functions\*

Scan-to-Email  
Scan-to-FTP  
Scan-to-SMB (Scan-to-Desktop)  
Scan-to-HDD (Scan-to-User Box)

### Available Fax Functions\*

Autodialing (2,000 one-touch keys)  
Auto Memory Reception  
Auto Reduction Printing  
Border Erase Transmission  
Broadcasting (maximum 600 locations)  
Bulletin Board  
Density Adjustment  
Duplex Transmission/Reception  
Exposure Mode (Text, Text/Photo, Photo, Dot Matrix)  
Group Dialing (up to 500 one-touches per group)  
Image Rotation Transmission/Reception  
Mailbox (Private) Transmission/Reception  
Memory/Quick Dial  
Mix Originals Transmission  
Original Size Designation  
Overseas Transmission  
Password Transmission/Reception  
PC Fax  
Polling Transmission/Reception  
Priority Transmission  
Print Setting for Overnight Reception  
Program Dialing (400 programs)  
Redial  
Relay Broadcasting  
Relay Transmission  
Remote Reception  
Secure Printing  
Telephone/Fax Auto Transfer  
Timer Transmission

### Emperon Print System

#### PROCESSOR:

600 MHz

#### RAM:

512 MB (shared scan and copier memory)

#### HARD DISK DRIVE:

40 GB (shared scan and copier HDD)

#### PAGE DESCRIPTION LANGUAGE:

PCL 5e/5c Emulation  
PCL 6 (XL version 2.1) Emulation  
PS3 Emulation

#### FONTS:

PCL Resident Fonts: 80 outline + 1 bitmap  
PS3 Emulation Resident Fonts: 136 outline

#### PRINT DRIVERS:

PCL 6:  
Windows 98 SE/ME, 2000/XP/2003, NT 4.0  
PS3:  
Windows 98 SE/ME (PPD files)  
2000/XP/2003 (Print Driver)  
NT 4.0 (Print Driver)  
Mac OS 9.2 or later, Mac OS X 10.2 and Mac OS X 10.3 (PPD files)  
TWIN Driver:  
Windows 98 SE/ME, 2000/XP, NT 4.0 SP6



### Emperon Print System Continued

#### INTERFACE:

Ethernet 10/100 BaseT  
Parallel IEEE 1284 (optional)  
USB 1.1, 2.0 (optional)

#### PROTOCOLS:

TCP/IP  
IPX/SPX  
AppleTalk (EtherTalk)  
LPR  
SMB  
LPD  
Netware (4.x, 5, 6)  
Pserver  
N Printer  
NDPS  
IPP  
SMTP  
POP3  
LDAP  
SSL  
SNMP  
HTTP 3.0

#### PAGESCOPE APPLICATIONS:

Network & Device Management  
PageScope Box Operator  
PageScope WorkWare\*\*  
PageScope EMS Plug-Ins  
PageScope NDPS Gateway  
PageScope Net Care  
PageScope Network Setup  
PageScope Web Connection (embedded)  
PageScope Data Administrator  
PageScope Job Spooler

### Fieri® IC-402 Embedded Image Controller (option)\*\*

**PROCESSOR:** Intel® Celeron® 2.0 GHz

**OPERATING SYSTEM:** Linux

**HARD DISK DRIVE:** 40 GB

**MEMORY:** 256 MB (standard);  
512 MB (maximum)

**PAGE DESCRIPTION LANGUAGE:**  
PCL 6, Adobe PostScript 3 (3016)

**FONTS:** PostScript Fonts: 136,  
PCL Fonts: 45

#### PRINT DRIVERS:

Windows 98 SE/ME, 2000, XP, NT 4.0  
Mac OS 8.6, 9.x  
Mac OS X 10.1 and 10.2 (Classic mode)  
Mac OS X 10.2.4 and later (Native mode)

**INTERFACE:** 10/100 BaseT, RJ45, USB 2.0

#### PROTOCOLS:

TCP/IP (Static IP, Auto IP, DHCP/BOOTP),  
LPR, SMB, IPX/SPX (NDS), AppleTalk (EtherTalk), HTTP, SNMP, IPP,  
Port 9100, SMTP, POP3, LDAP,  
SSL/TLS

#### UTILITIES:

ColorWise® Pro Tools 3.0  
Command Workstation™ 4.2 (for Windows)  
Command Workstation™ LE (for Mac OS 10.2.4 and later)  
Fieri® Downloader™  
Fieri® Spooler™  
Fieri® WebTools™  
Standard Spot-On Color Matching

#### OPTIONS:

256 MB Memory (upgrade, IC-402)  
EFI Impose (v. 2.1)  
EFI Denstometer (ED-100)  
Graphic Arts Options: Hot Folders,  
Auto Trapping  
EFI Color Profiler Kit (ES-1000) (Spectrophotometer with monitor profiling software)



© 2005 KONICA MINOLTA BUSINESS SOLUTIONS U.S.A., INC. All rights reserved. Reproduction in whole or in part without written permission is prohibited. Konica Minolta and The essentials of imaging are trademarks of KONICA MINOLTA HOLDINGS, INC. bizhub and PageScope are trademarks of KONICA MINOLTA BUSINESS TECHNOLOGIES, INC. Simitri is a registered trademark of KONICA MINOLTA BUSINESS SOLUTIONS. Fieri, ColorWise, Command Workstation, DocBuilder, Fieri Downloader, Fieri Spooler, and Fieri WebTools are trademarks of EFI. All other brands and product names are registered trademarks or trademarks of their respective owners.

Design & specifications are subject to change without notice.

\* Some functions may require options, which may or may not be available at time of launch.

\*\* Available in Summer 2005

# bizhub C450



KONICA MINOLTA

KONICA MINOLTA BUSINESS SOLUTIONS U.S.A., INC.

100 Williams Drive  
Ramsey, NJ 07446

[www.kmbs.konicaminolta.us](http://www.kmbs.konicaminolta.us)  
[www.konicaminolta.us/solutions](http://www.konicaminolta.us/solutions)