



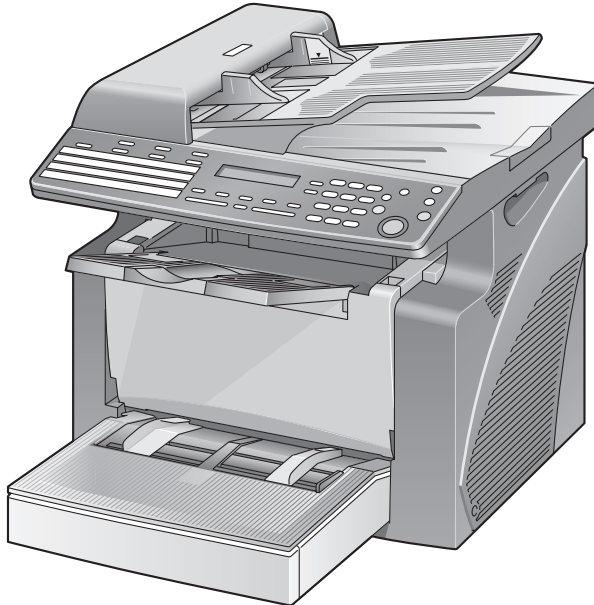
KONICA MINOLTA

The essentials of imaging

# KONICA MINOLTA FAX2900/FAX3900

---

## User's Guide TWAIN Driver



# Contents

<b>1</b>	<b>Setting Up PC Scanning</b>	
<b>2</b>	<b>Connecting to the USB Port</b>	
<b>3</b>	<b>Installing the TWAIN Driver</b>	
<b>3.1</b>	<b>Installing the TWAIN Driver Using Plug and Play</b>	<b>3-1</b>
	Installing the TWAIN Driver Using Plug and Play Under Windows XP	3-1
	Installing the TWAIN Driver Using Plug and Play Under Windows 2000	3-3
	Installing the TWAIN Driver Using Plug and Play Under Windows Me/98 SE	3-4
<b>4</b>	<b>Scanning a Document</b>	
<b>4.1</b>	<b>Using the Auto Document Feeder</b>	<b>4-1</b>
<b>5</b>	<b>Common Settings</b>	
<b>5.1</b>	<b>Auto Options</b>	<b>5-1</b>
<b>5.2</b>	<b>Manual Options</b>	<b>5-3</b>
<b>6</b>	<b>Error Messages</b>	
	Original Document Jam	6-1
	Memory Full	6-3
	Communication Error	6-3
	Scanner Busy	6-4
	Read Data Error	6-4



---

# 1 Setting Up PC Scanning

If the enclosed TWAIN Driver is installed on the computer, this copier can be used to scan documents to a PC.

The following software and hardware environment is required for PC scanning.

- OS: Windows 98 SE, Windows Me, Windows 2000, or Windows XP
- TWAIN-compatible image-processing software (such as Adobe Photoshop)
- USB V.1.1 (or later version)



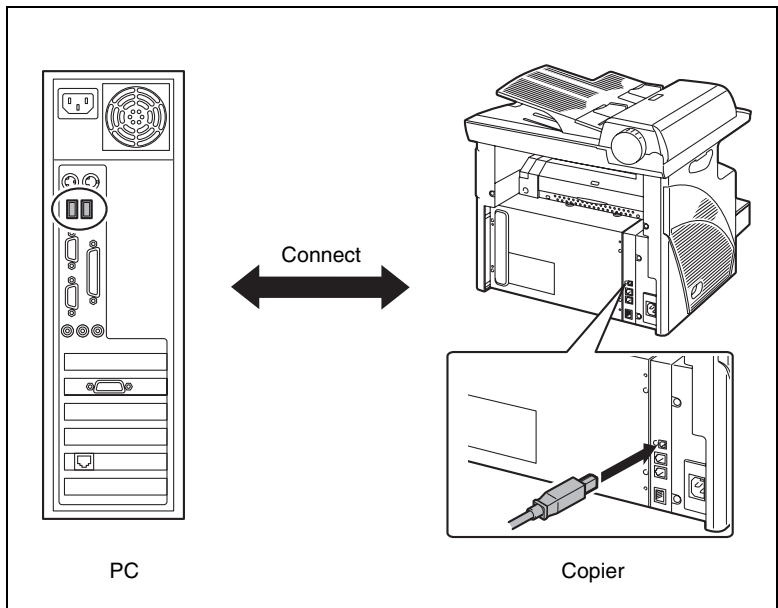
## 2 Connecting to the USB Port



### Important!

*Be sure to use a shielded USB cable. Use of an unshielded cable may result in radio interference.*

- 1 Make sure that the copier and the computer to be connected to the copier are turned off.
- 2 Connect one end of the USB cable to the USB port of the copier.



This completes the connection.



### Note

*Only Windows 98 SE, Windows Me, Windows 2000, and Windows XP support USB1.1.*



## 3 Installing the TWAIN Driver

This section describes the procedure for installing the TWAIN driver. The printer driver can be installed by using Plug and Play.

### 3.1 Installing the TWAIN Driver Using Plug and Play

#### Installing the TWAIN Driver Using Plug and Play Under Windows XP

- 1 With Windows running, insert the CD-ROM into your computer's CD-ROM drive.
- 2 Turn on the copier.
- 3 When the copier is ready, connect it to the computer with the USB cable. The "Found New Hardware Wizard" dialog box appears.
- 4 Select **Install from a list or specific location [Advanced]**, and then click [Next].
- 5 Select **Include this location in the search: under Search for the best driver in these locations.**, and then click [Browse].
- 6 Browse to "Driver\*(language)*\WinXP" on the CD-ROM, and then click [OK].



#### Tip

Select the language you prefer. For example, if you prefer English, browse to:  
*Driver\English\WinXP*

- 7 Click [Next].
  - The following box dialog appears. Click [Continue Anyway].



- 8 The "Completing the Found New Hardware Wizard" dialog box appears.
  - Click [Finish].
- 9 The "Found New Hardware Wizard" dialog box appears again.
  - Repeat steps 4 through 7.

**Note**

*This completes the installation of the TWAIN driver.*

## Installing the TWAIN Driver Using Plug and Play Under Windows 2000

- 1 With Windows running, insert the CD-ROM into your computer's CD-ROM drive.
- 2 Turn on the copier.
- 3 When the copier is ready, connect it to the computer with the USB cable.

The "Found New Hardware Wizard" dialog box appears.

- 4 Select **Search for a suitable driver for my device (recommended)** in the "Install Hardware Device Drivers" dialog box, and then click [Next].

The "Locate Driver Files" dialog box appears.

- 5 Select **Specify a location**, and then click [Next].
- 6 Click [Browse...] on the next dialog box, browse to "Driver\*(language)*\Win2K" on the CD-ROM, and then click [OK].



...

### Tip

*Select the language you prefer. For example, if you prefer English, browse to:*

*Driver\English\Win2K*

- 7 Click [OK], and then follow the instructions that appear on the screen until the "Completing the Found New Hardware Wizard" dialog box appears.
  - Click [Finish].
- 8 The "Found New Hardware Wizard" dialog box appears again.
  - Repeat steps 4 through 7.



...

### Note

*This completes the installation of the TWAIN driver.*

### Installing the TWAIN Driver Using Plug and Play Under Windows Me/98 SE

- 1 With Windows running, insert the CD-ROM into your computer's CD-ROM drive.
- 2 Turn on the copier.
- 3 When the copier is ready, connect it to the computer with the USB cable.
  - The "Add New Hardware Wizard" dialog box appears.
- 4 Click [Next], and then select **Search for the best driver for your device (Recommended)** on the next dialog box.
  - Click [Next] again.
- 5 Select [Specify a location], and then click [Browse...].
- 6 Browse to "Driver\*(language)*\Win9X" on the CD-ROM, and then click [OK].

**Tip**

Select the language you prefer. For example, if you prefer English, browse to:

*Driver\English\Win9X*

- 7 Click [Next], and then follow the instructions that appear on the screen until you can click [Finish].
- 8 The "Add New Hardware Wizard" dialog box appears again.
  - Repeat steps 4 through 7.

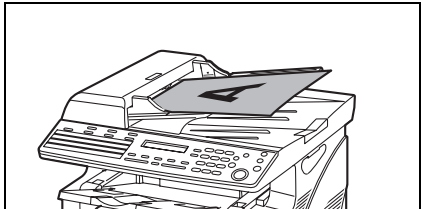
**Note**

Repeat steps 4 through 7 until the installation is completely finished. This completes the installation of the TWAIN driver.

## 4 Scanning a Document

### 4.1 Using the Auto Document Feeder

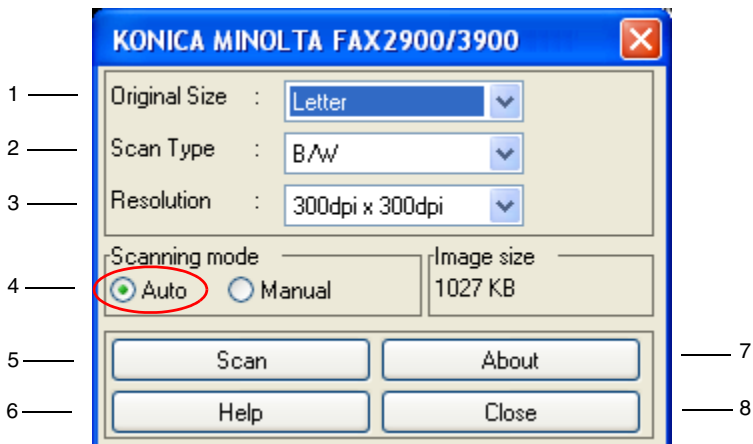
- 1 Select the appropriate PC software (Imaging, Photoshop, etc.). This procedure uses Microsoft Imaging as an example.
- 2 Click [File].
- 3 Click [Select Device...].
- 4 Choose “KONICA MINOLTA FAX2900/3900” from the dialog box, and then click [OK].
- 5 Click [Acquire Image...], and then adjust any settings necessary.
  - See “*Common Settings*” on page 5-1.
- 6 Place the document face up on the auto document feeder..
- 7 Click [Scan] to begin scanning.





## 5 Common Settings

### 5.1 Auto Options



No.	Items	Settings
1	Original size	A4, B5, A5, FLS, Legal, Letter, Half Letter, 16K See "Original Size:" on page 5-1.
2	Scan type	B/W (default setting), Photo, True Color See "Scan Type:" on page 5-2.
3	Resolution	150dpi × 150dpi, 300dpi × 300dpi (default setting), 600dpi × 600dpi See "Resolution:" on page 5-2.
4	Scanning mode	Auto (default setting), Manual
5	Scan	Scans an image.
6	Help	See the [Help] file.
7	About	See the version information.
8	Close	Closes the scanner dialog box.

#### Original Size:

Select an option from the **Original Size** pull-down list to match the size of document to be scanned.

**Scan Type:**

The **Scan Type** pull-down list contains the following options.

- B/W: Suitable for most text documents
- Photo: Suitable for photographs
- True Color: Suitable for very detailed color images

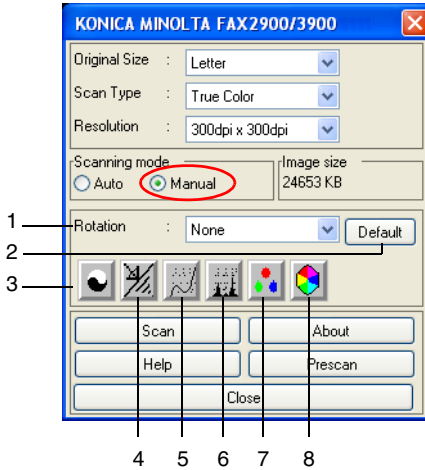
**Resolution:**

The **Resolution** pull-down list contains the following options, which can be used for different purposes.

- 150dpi × 150dpi: Normal resolution for text documents containing standard-sized text.
- 300dpi × 300dpi: Higher resolution for text documents containing small characters or fine print, such as a newspaper article. This is the default setting.
- 600dpi × 600dpi: Highest resolution for scanning photographs and other images.

## 5.2 Manual Options

To access the enhanced settings, select **Manual** as the Scanning mode.



No.	Items	Settings
1	Rotation	None (default setting), Right 90, Left 90
2	Default	Click [Default] to restore all the enhanced settings to their default values.
3	Brightness/Contrast	-100 to 100%
4	Sharp	-2 to 3 See "Sharp:" on page 5-4.
5	Curve	-100 to 100 See "Curves:" on page 5-4.
6	Level	Input Levels: Minimum: 0 to 247 Gamma: 0.10 to 9.99 Maximum: 8 to 255  Output Levels: Minimum: 0 to 247 Maximum: 8 to 255  Note: The difference between Maximum and Minimum cannot be smaller than 8. See "Level:" on page 5-4.
7	Color Balance	-100 to 100 See "Color Balance:" on page 5-4.
8	Hue/Saturation	Hue: -180 to 180 Saturation: -100 to 100 Lightness: -100 to 100 See "Hue/Saturation:" on page 5-4.

**Sharp:**

This function is used to sharpen the image or blur it for effect.

**Curves:**

This function is used to set the gamma of the image.

This function will allow you to brighten or darken the overall image without changing the original resolution.

There are three input controls available.

- The scroll bar
- The editing field
- Directly dragging points along the angled or curved lines

**Level:**

This function is used to set the gamma value, increase shadow and highlight areas, enhance shadow values, and reduce highlight values.

**Color Balance:**

This function is used to fine-tune the RGB values in shadows, midtones, and highlight areas.

There are three setting options.

- Cyan-Red
- Magenta-Green
- Yellow-Blue

**Hue/Saturation:**

This function is used to set the hue and saturation as well as the lightness of the image.

The hue can be set within a range of -180 to 180.

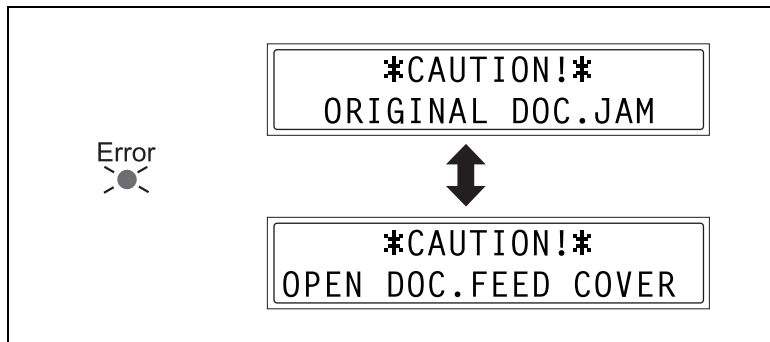
The saturation setting can be used to adjust the freshness of colors in a range of -100 to 100.

Lightness can be set from -100 to 100.

## 6 Error Messages

### Original Document Jam

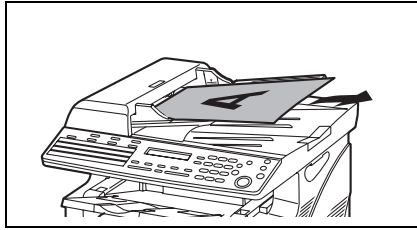
Message on the control panel:



Cause	Remedy
<ul style="list-style-type: none"><li>• A paper misfeed occurred in the auto document feeder.</li><li>• All misfed paper was not removed from the auto document feeder.</li></ul>	<ul style="list-style-type: none"><li>• Open the document feeder cover and the auto document feeder, and then remove the misfed paper.</li></ul>

### To clear a misfeed in the auto document feeder

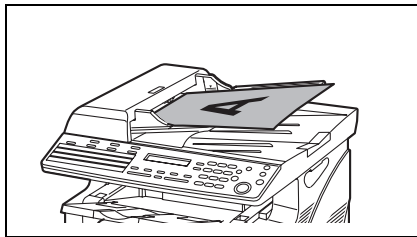
- 1 Remove the original document from the document feeder tray..



- 2 Open the document feeder cover, and then gently remove the misfed paper.

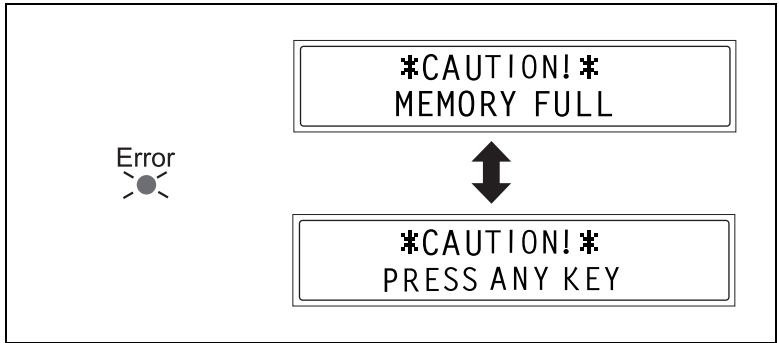


- 3 Close the document feeder cover, and then load the document removed in step 1 into the auto document feeder again.



## Memory Full

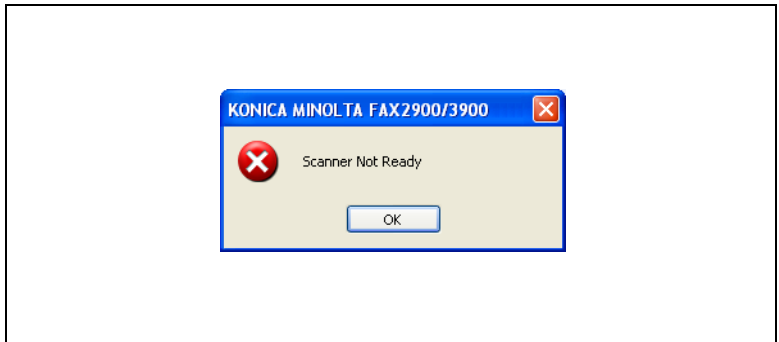
Message on the control panel:



Cause	Remedy
<ul style="list-style-type: none"> <li>There is not enough memory.</li> </ul>	<ul style="list-style-type: none"> <li>Press any key on the control panel of the copier.</li> </ul>

## Communication Error

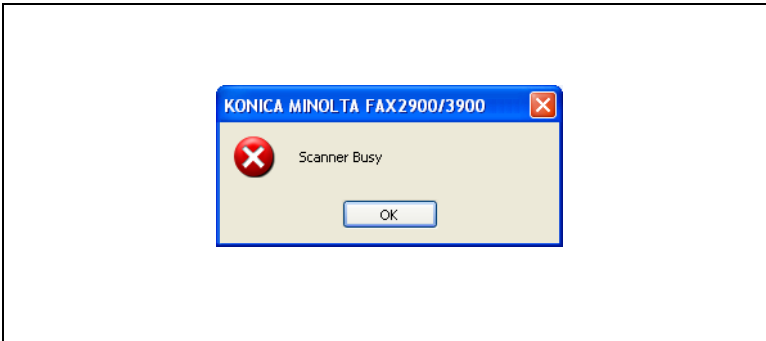
Message on the PC screen:



Cause	Remedy
<ul style="list-style-type: none"> <li>PC or copier system crash during communication.</li> <li>USB cable does not connect properly during communication.</li> </ul>	<ol style="list-style-type: none"> <li>Turn the copier off, and then check if the USB cable is connected properly or not.</li> <li>After checking the USB cable carefully, turn the copier on again.</li> <li>If the problem persists, call your service representative.</li> </ol>

## Scanner Busy

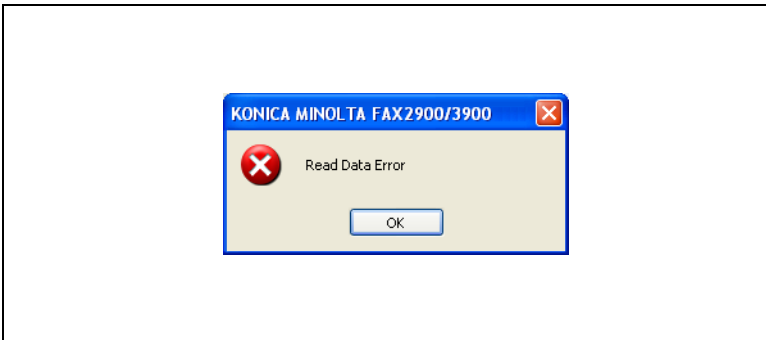
Message on the PC screen:



Cause	Remedy
<ul style="list-style-type: none"> <li>If TWAIN scanning and copy jobs are being performed at the same time, the copier may stop in the middle of scanning.</li> </ul>	<ul style="list-style-type: none"> <li>Wait until all copying or scanning is over.</li> </ul>

## Read Data Error

Message on the PC screen:



Cause	Remedy
<ul style="list-style-type: none"> <li>An error occurred when reading data from the copier while scanning.</li> </ul>	<ol style="list-style-type: none"> <li>Turn the copier off, and then check if the USB cable is connected properly or not.</li> <li>After checking the USB cable carefully, turn the copier on again.</li> <li>If the problem persists, call your service representative.</li> </ol>



**KONICA MINOLTA**

<http://konicaminolta.com>

**Copyright**